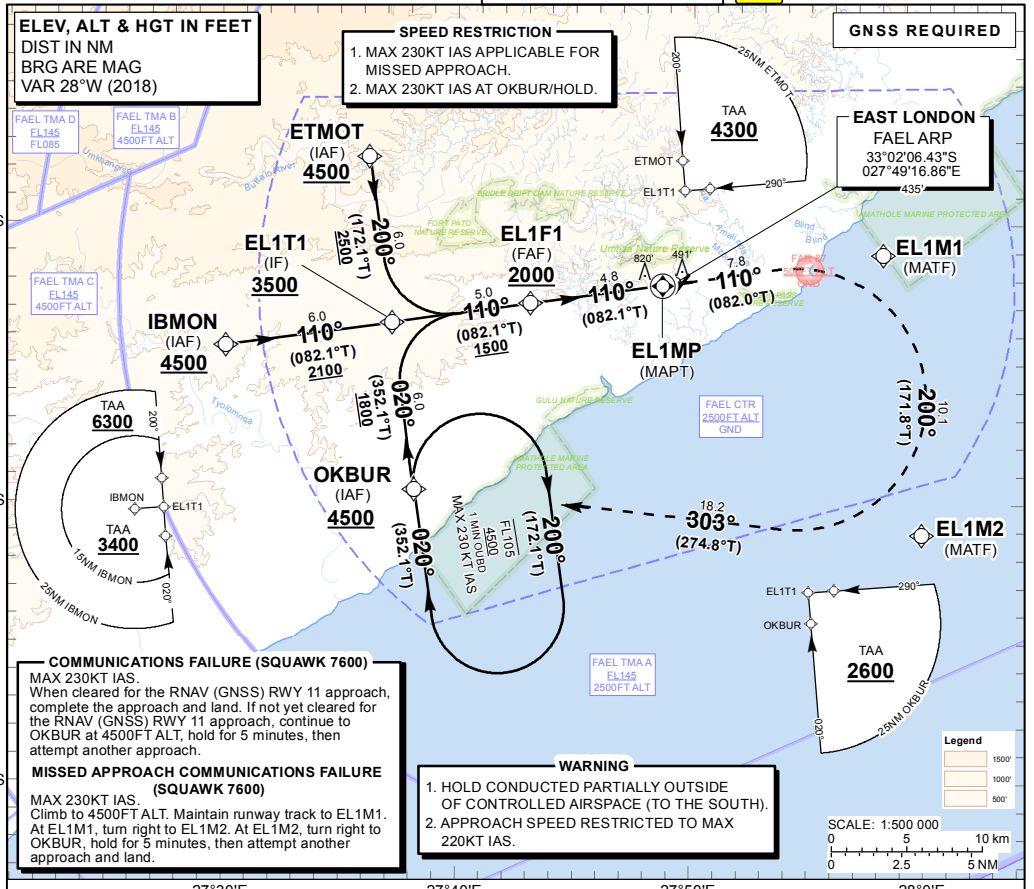


INSTRUMENT APPROACH CHART - ICAO **AERODROME ELEV 435'**
 HEIGHTS RELATED TO THR RWY 11 - ELEV 433'

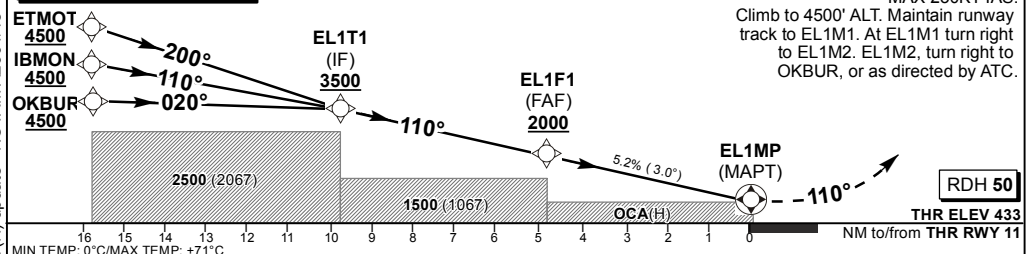
FAEL: ATIS: 126.65
 APN: 122.65
 TWR: 118.30
 APP: 120.10

EAST LONDON RNAV (GNSS) RWY 11
 CAT A - D



Distance from THR 11	4.8	4.0	3.0	2.0	1.0	
ADVISORY ALT(HGT)	2000 (1567)	1750 (1317)	1440 (1007)	1120 (687)	800 (367)	

TRANSITION ALT 7000
TRANSITION LEVEL ATC



Straight-in Approach	LNAV	OCA (H)				GS	KT	80	100	120	140	160	180
		A	B	C	D								
LNAV/VNAV	2.5%	1070 (637)	1070 (637)	1070 (637)	1070 (637)	FAF to THR 11	M:S	3:36	2:52	2:24	2:03	1:48	1:36
	2.6%	1020 (587)	1020 (587)	1020 (587)	1020 (587)	Rate of descent	FPM	421	527	632	737	843	948
RVR		1000m	1200m	1200m	1600m	NOTE:							
ALS OUT		1500m	1500m	2000m	2000m	1. MAPT at THR.							
Circling		1130 (695)	1130 (695)	1470 (1035)	1470 (1035)	2. Turns prior MAPT prohibited.							
						3. BaroVNAV operations not authorised below 0°C and MAX VPA 3.5°C, Temperature +71°C.							

CHANGE: LNAV OCA (H) update - NOTAM A2604/18